

## WONDERS OF THE SEA – IOP

Dear Digital Cinema Managers and Projection Staff:

Digital Cinema Distribution Coalition (DCDC) has been contracted by **FATHOM** to distribute **WONDERS OF THE SEA 2D/3D** for theatrical release.

We ask you to ingest the contents as soon as possible and schedule a quality check screening after the keys unlock the feature. On average, it could take 24-48 hours to receive a hard drive in the event of a satellite failure or replace a faulty hard drive.

**If you encounter any issues, please call our 24/7 Helpline at 877-272-3870.**

**LMS LOCATIONS:** Use a "Walk-in Offset" of 30 minutes to ensure the walk-in file starts playback 30 minutes before the ticketed show time.

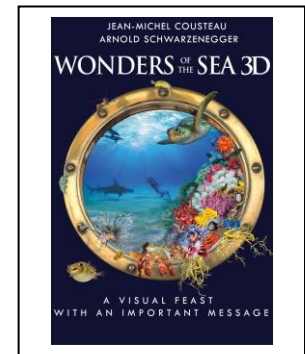
**SONY TMS LOCATIONS:** Place the "Performance Start" trigger between the walk-in and preshow files.

**DOREMI TMS LOCATIONS:** Place "Ad Start" macro before the walk-in file and "Ad End" macro after the walk-in file, before the preshow file. Cinemark locations - refer to NCM 3D Advertising playlist instructions provided by Cinemark Support Center.

**\*\*\*Note: Please see lighting cues below \*\*\***

### Preshow Lights Down – Trailers/Feature Lights Up - Credits

STUDIO	FATHOM
RATING	N/A
PRE-SHOW RUN TIME 2D/3D	00:30:00:01
TRAILERS/FEATURE 2D/3D	01:24:07:21
CREDITS 2D/3D	01:26:40:03
FILE SIZES; PRE SHOW 2D/3D / FEATURE 2D/3D – OV	Pre-show 2D 14.16 GB / Pre-show 3D 14.71 GB / Feature 2D 93.69 GB / Feature 3D 136.1 GB
TOTAL RUN TIME 2D/3D	01:26:40:03
KEYS/KDMS	Encrypted – Keys needed



### SATELLITE CONTENT FOLDER:

WOTS_2D3D_FATHOM	798d8a36-4b3f-40c8-9c0a-eaad9cdf8253
------------------	--------------------------------------

### FEATURES 2D

Fathom Pre-Show – 2D 5.1 OV	WondersSeaPre_ADV_F_EN- XX_US_51_2K_FE_20190108_FE_IOP_OV
Wonders of the Sea– 2D 5.1 OV	Wondersofthese_FTR2-2D_F_EN-XX_INT- TD_51_2K_3DE_20190108_MBP_OV

### FEATURES 3D

Fathom Pre-Show – 3D 5.1 OV	WondersSeaPre_ADV-3D_S_EN- XX_US_51_2K_FE_20190108_FE_IOP_OV
Wonders of the Sea– 3D 5.1 OV	Wondersofthese_FTR1-3D_S_EN-XX_INT- TD_51_2K_3DE_20181220_MBP_OV

### Drive Return Information



**PHONE SUPPORT: (877) 272-3870 | E-MAIL SUPPORT: [ddchelp@bydeluxe.com](mailto:ddchelp@bydeluxe.com)**

- We have included a UPS label for you to **return the drive to DCDC**. Please pack the drive into the box you received. Apply the return UPS shipping label over the old label on the outside. Verify that the label now indicates SHIPPING DEPARTMENT, 9653 S. 500 W. Sandy, UT 84070
- When UPS arrives for deliveries, hand the package to the driver. **Record the tracking number for proof of return.**
- If your hard drive has not been picked up by the Friday after you have ingested the content, please contact our Recovery Department at 1-800-993-4567 (after you choose your language, select option 2).